

Destination 2040 includes improvements and maintenance, as well as increased access points, along the 34-mile Rio Grande Trail.

Destination 2040 will enhance multi-modal transportation options to ensure mobility. By doing so, RFTA will partner with communities to address the growth of traffic.

WHY IS RFTA DOING THIS?



Population, employment growth and housing development in the region will continue to increase over the next 20 years.



Increasing multi-modal transportation options will help the region address expected traffic demand and congestion increases.



New technology for traffic management and electric buses can help meet the community's environmental goals.

9.3

YEARS

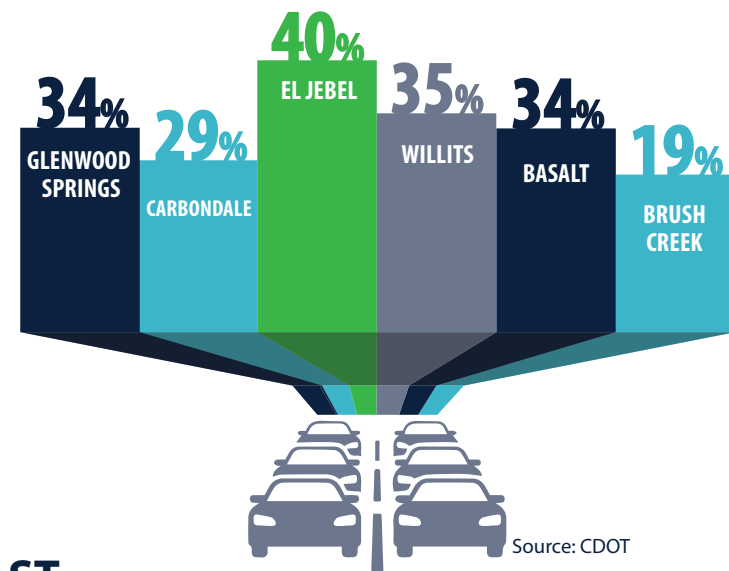
Current average RFTA bus age. Buses should be replaced at 12 years.

402,000

MILES

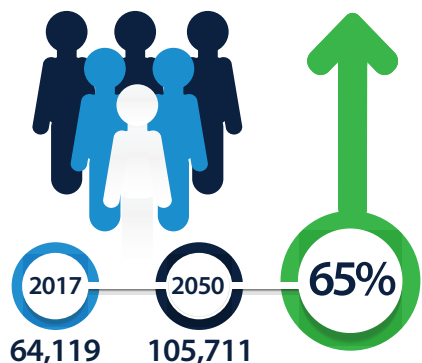
Current average mileage on RFTA buses. Buses should be replaced at 500,000 miles.

STATE HIGHWAY 82 2038 TRAFFIC GROWTH FORECAST

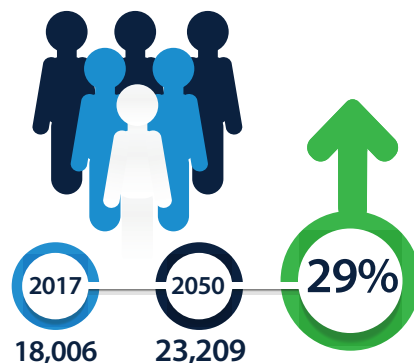


POPULATION GROWTH FORECAST

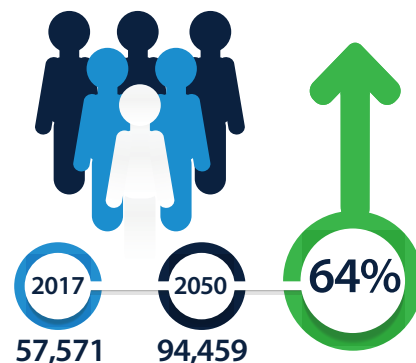
GARFIELD COUNTY



PITKIN COUNTY



EAGLE COUNTY



Source: Colorado State Demographers Office

HOW WILL WE PAY FOR THIS?

State law allows a Regional Transportation Authority, such as RFTA, to collect up to 5 mills in property taxes, with voter approval. In order to prepare RFTA to address the region's future mobility challenges, the RFTA Board of Directors has reviewed several "Destination 2040" funding scenarios. Following a Public Hearing on August 9, 2018, the RFTA Board unanimously voted to refer a 2.65 mill levy ballot measure to voters who reside within RFTA's member jurisdictions, to help fund strategic improvements to the region's transportation system.

What Would a 2.65 Mill Levy Look Like?

RESIDENTIAL

What might the proposed RFTA Mill Levy Cost a Homeowner?

Assessment Rate 6.11%

\$6.75

PER MONTH

For \$500K actual value home at 2.65 Mill

\$80.95

PER YEAR

For \$500K actual value home at 2.65 Mill

COMMERCIAL

What might the proposed RFTA Mill Levy Cost a Commercial Property Owner?

Assessment Rate 29%

\$64.04

PER MONTH

For \$1M actual property value at 2.65 Mill

\$768.50

PER YEAR

For \$1M actual property value at 2.65 Mill

www.RFTA2040.com

Questions or Comments?
info@rfta2040.com



The Roaring Fork Transportation Authority (RFTA) is the mobility solution for this region. RFTA makes getting around the valley much easier and less costly through rapid transit solutions, local bus service, pedestrian enhancements, access to bike share and regional bike and pedestrian trails. However, there are a number of obstacles in RFTA's way to continue to serve this community and to meet this region's growing mobility needs of the future.

To address this, at its meeting on August 9, 2018, the RFTA Board unanimously voted to refer a 2.65 mill levy ballot measure to voters who reside within RFTA's member jurisdictions, in order to fund this action plan.

Destination 2040 is the road map to allowing RFTA to continue the level of services we enjoy today, and to serve the region's growing travel needs for the next 20 years.



RFTA'S BIGGEST CHALLENGES:

- ✗ An aging fleet that is unable to keep up with growing demand
- ✗ Unable to meet the demand for evening and weekend service
- ✗ Unable to provide more off-season services
- ✗ Lack of parking at stops and stations
- ✗ Maintaining the Rio Grande Trail for cyclist and pedestrians
- ✗ Building new regional trails
- ✗ Providing safe pedestrian access to bus stations and trails



RFTA DESTINATION 2040 PROPOSES TO:

- + Replace the bus fleet, including electric zero-emission buses
- + Provide more evening, night and weekend services
- + Increase service levels throughout the Roaring Fork and Colorado River valleys
- + Expand parking options at stations and stops
- + Continue to maintain and enhance the Rio Grande Trail
- + Help construct the LOVA trail
- + Expand and enhance major pedestrian crossings in the Roaring Fork Valley



PROPOSED IMPROVEMENTS

IMPROVEMENTS FOR REDUCING CONGESTION AND IMPROVING MOBILITY

- C1** Service Increase, 30-minute Valley Service
- C2** Bus Fleet Expansion for New Services
- C3** Service Increase, Weekend BRT (Spring/Fall)
- C4** I-70 Grand Hogback Service - 27th Street to New Castle, 30 min headways
- C5** Extend BRT to Downtown GWS and RFTA Local Service on Hwy 6/24
- C6** Better transit service connections to Snowmass Village on Brush Creek Road
- C7** Improvements to Mid Valley Hwy 82 Bus Stops
- C8** Glenwood Springs 27th Street BRT Station Parking Expansion
- C9** Willits BRT Station Parking Expansion
- C10** Carbondale BRT Station Parking Expansion
- C11** Aspen Junction (Basalt) Park and Ride Expansion
- C12** New Castle Parking Expansion
- C13** Improvements to Town of Snowmass Village Transit Center *
- C14** Upper Valley Congestion Management Study
- C15** Buttermilk Parking Management
- C16** BRT Enhancements to Brush Creek Intercept Lot
- C17** Pick Up/Drop Off Accommodations at BRT Stations

IMPROVEMENTS FOR SUSTAINABILITY AND SAFETY

- S1** Pedestrian Crossings of 27th Street and Highway 82 in Glenwood Springs *
- S2** South Bridge Highway 82 Connection in Glenwood Springs *
- S3** Pedestrian Crossing at 23rd Street in Glenwood Springs *
- S4** Buttermilk Pedestrian Crossing in Pitkin County *
- S5** Enhanced Crossing of Rio Grande Trail at 14th Street in Glenwood Springs
- S6** Aspen Maintenance Facility Expansion *
- S7** RFTA Glenwood Springs Maintenance Facility Expansion *
- S8** 900 Block Grand Avenue In-Line Transit Stations in Glenwood Springs
- S9** New Transit Station in Glenwood Springs *
- S10** Replacement of Employee Housing and Carbondale Office Space *

IMPROVEMENTS FOR THE ENVIRONMENT

- E1** Bus Replacement (Electric, CNG, Clean Diesel)
- E2** Bike Share Expansion
- E3** Real Time Traveler Information
- E4** LOVA Trail Construction from Glenwood Springs to New Castle *
- E5** Rio Grande Trail Maintenance and Improvements

LEGEND

This project is included in the 2.65 mill levy plan

This project not included in the 2.65 mill levy plan. RFTA will pursue funding from grants and other sources.

* Partial RFTA contribution to overall project

Transit Improvement	Trail Improvement	ROUTES/TRAILS	Hogback Route
Parking Improvement	Pedestrian Crossing Improvement	BRT Route	Snowmass Route
Station Improvement	Building Improvement	Valley Route	Rio Grande Trail

